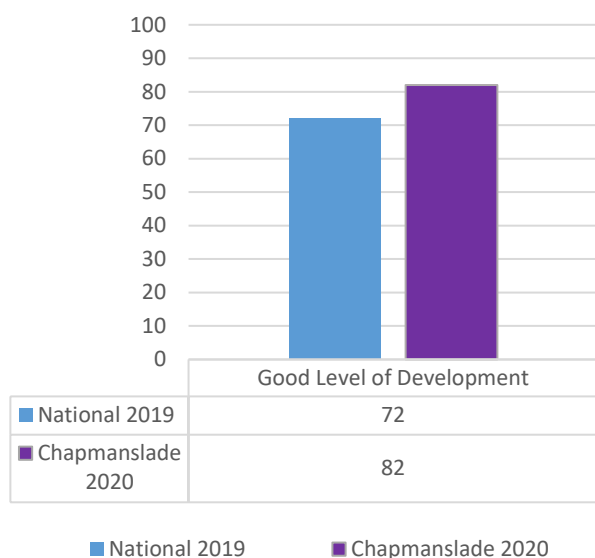


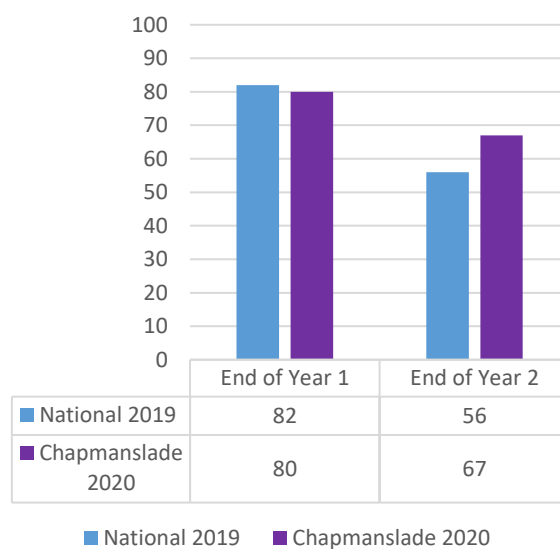
## 2020 School Results Summary for Chapmanslade School

All official assessments were cancelled in 2020 due to the Covid-19 pandemic and subsequent school closures. The charts below are based on on-going assessment that was undertaken up to March 2020, our professional judgement, and our experience of the progress pupils tend to make between March and June. We believe these are the results our pupils would have achieved, had the academic year progressed as usual. "R, W & M" represents the % of pupils who met the standard in Reading, Writing and Maths combined. A pupil in our school usually represents 6-7% of the year group so any difference below 6% has no significance.

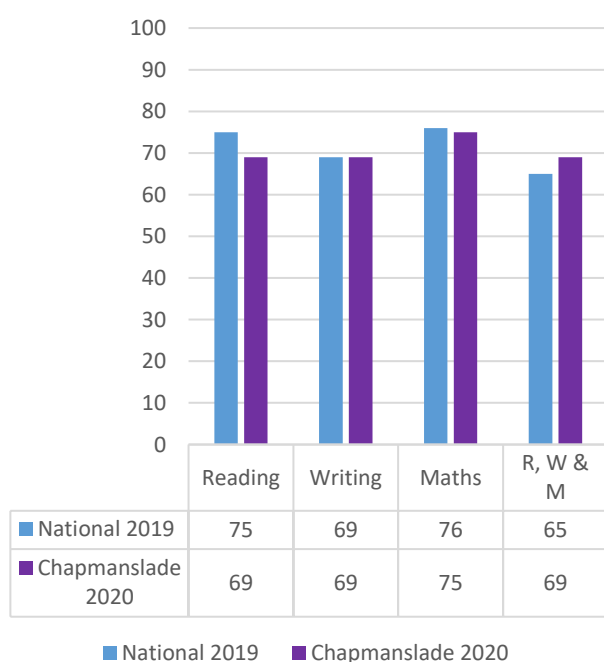
### 2020 Early Years Profile % Meeting the Expected Standard



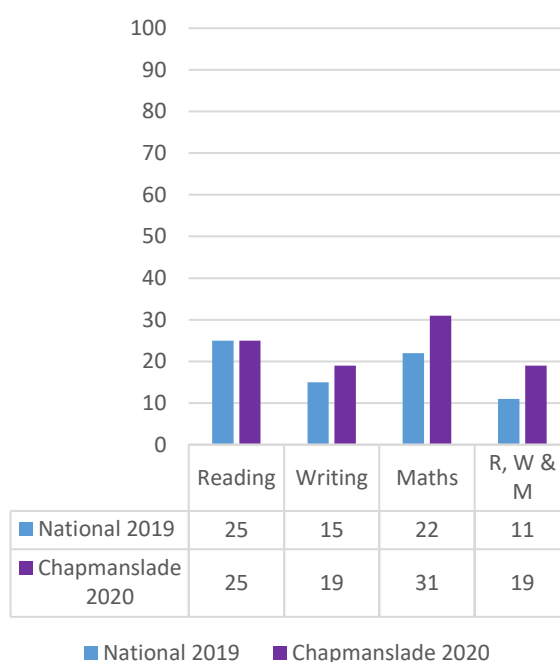
### 2020 Phonics Check % Meeting the Expected Standard



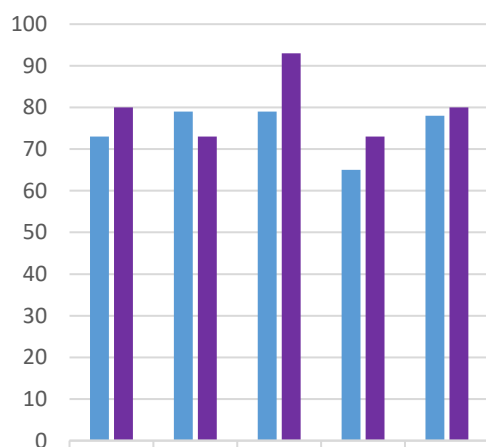
### 2020 KS1 Results % Meeting the Expected Standard



### 2020 KS1 Results % Exceeding the Expected Standard



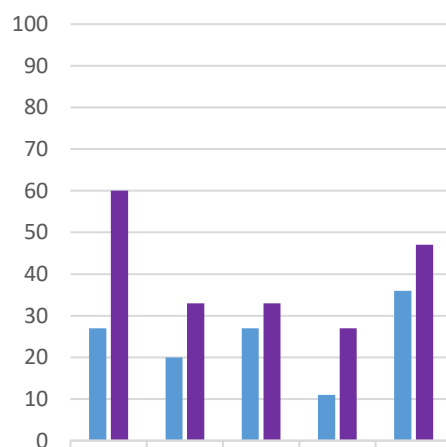
### 2020 KS2 Results % Meeting the Expected Standard



|                     | Read-<br>ing | Writ-<br>ing | Maths | R, W &<br>M | GPS |
|---------------------|--------------|--------------|-------|-------------|-----|
| ■ National 2019     | 73           | 79           | 79    | 65          | 78  |
| ■ Chapmanslade 2020 | 80           | 73           | 93    | 73          | 80  |

■ National 2019   ■ Chapmanslade 2020

### 2020 KS2 Results % Exceeding the Expected Standard



|                     | Read-<br>ing | Writ-<br>ing | Maths | R, W &<br>& M | GPS |
|---------------------|--------------|--------------|-------|---------------|-----|
| ■ National 2019     | 27           | 20           | 27    | 11            | 36  |
| ■ Chapmanslade 2020 | 60           | 33           | 33    | 27            | 47  |

■ National 2019   ■ Chapmanslade 2020

Mrs Chapman  
14.09.20