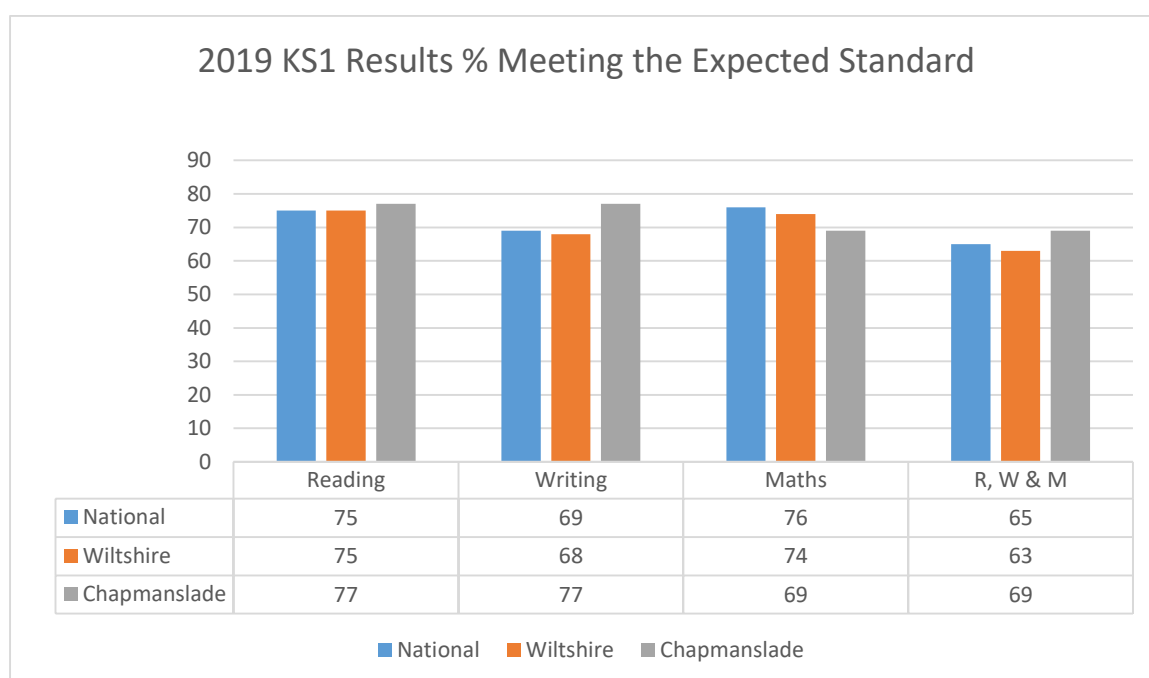
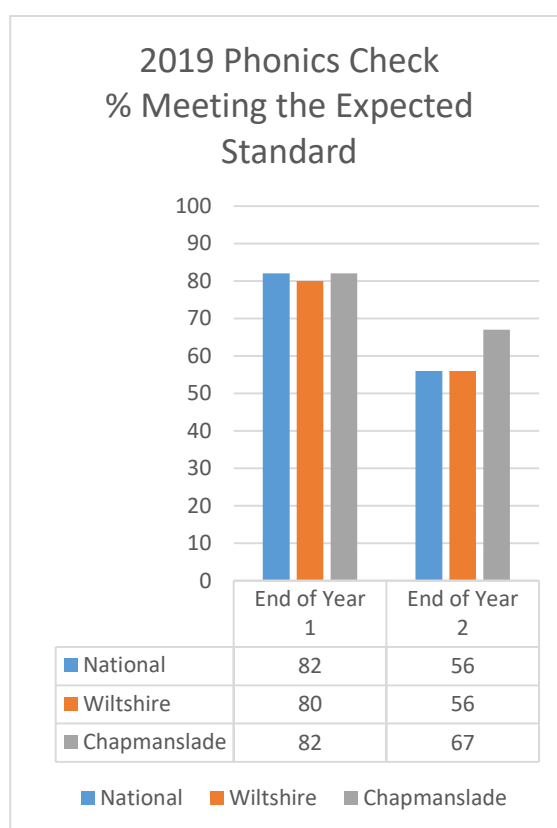
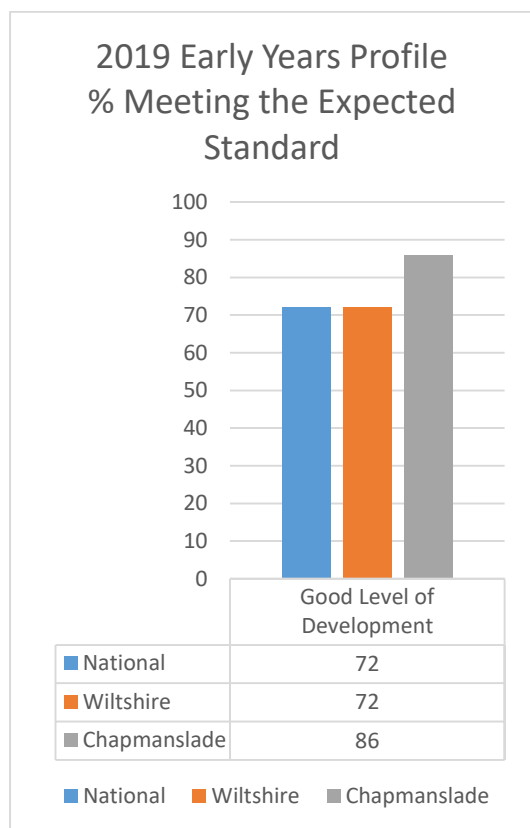
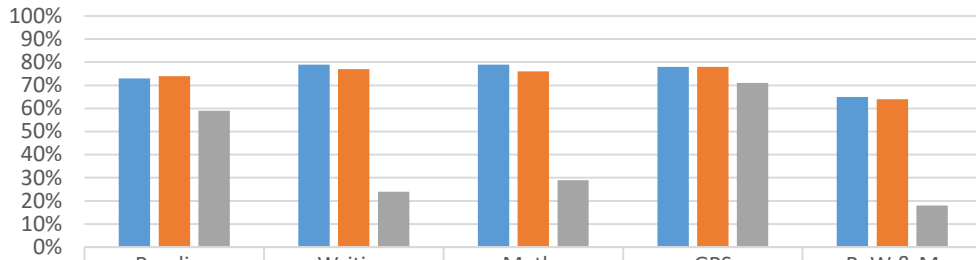


2019 School Results Summary for Chapmanslade School

The charts below are based on preliminary data from Wiltshire. Final validated results will be published nationally by the DfE in December. "R, W & M" represents the % of pupils who met the standard in all three of Reading, Writing and Maths



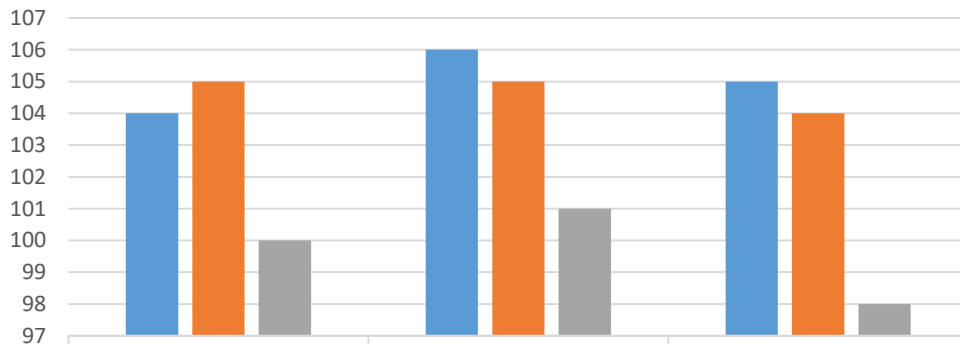
2019 KS2 Results, % Meeting the Expected Standard



	Reading	Writing	Maths	GPS	R, W & M
■ National	73%	79%	79%	78%	65%
■ Wiltshire	74%	77%	76%	78%	64%
■ Chapmanslade	59%	24%	29%	71%	18%

■ National ■ Wiltshire ■ Chapmanslade

2019 KS2 Results Average Scaled Score



	Reading	Grammar, Punctuation, Spelling	Maths
■ National	104	106	105
■ Wiltshire	105	105	104
■ Chapmanslade	100	101	98

■ National ■ Wiltshire ■ Chapmanslade

2016 – 19 Results Summary for Chapmanslade School

